

# Your guide to accommodation



# Living on campus

When you're at university your room is your space to call home, and where you live can play an important role in making new friends.

There are a lot of benefits to living on campus at the RAU. You'll get to know the university, have your lectures on your doorstep, and be right in the heart of the action.

## Benefits include

- With welfare and pastoral support from tutors, the student support services manager, accommodation officer, student team advice representatives (STARS), and University Nurse, there is always someone on hand in the case of an emergency
- Night security on campus to keep you and your belongings safe
- Free internet access in all rooms on our main campus
- You are close to all campus services; the Tithe Barn and bar, dining room, Retreat Café, library, sports facilities, launderette and University shop
- You can opt to stay in full board, half board or self-catered accommodation, with 39 week contracts or some 31 week contracts (where you vacate the room for 4 weeks at Christmas and 4 weeks at Easter)
- A housekeeping service; bedrooms are cleaned regularly and communal bathrooms daily
- The campus is a short distance from Cirencester town centre and a regular free shuttle bus runs from the University to Cirencester and the RAU farms



# Halls of residence

## You might like to bring

- alarm clock
- bed linen
- clothes airer
- coat hangers
- coat / waterproofs / wellies
- cushions / throws / rugs
- cutlery / crockery / mugs
- extension lead
- laptop / desktop PC
- laundry basket
- printer
- towels
- TV / DVD player and TV licence
- TV aerial / cable

## Already in your room

- single bed
- bedside table
- chair
- desk
- wardrobe
- duvet and cover (if required)
- pillow and cover (if required)
- sheets (if required)
- kettle
- lamp
- noticeboard

## Please don't bring

- heater
- toaster / sandwich toaster
- candles
- blu tack

Any electrical items will need to be PAT tested. This is a free service offered on site when you arrive

# Bledisloe Court

Bledisloe Court is divided into six houses on three levels, each house has nine or ten standard single bedrooms with a wash basin. All houses have shared toilet and shower facilities. The rooms have a light, airy feel, some with views across farmland towards the neighbouring village of Coates, or looking towards the RAU campus.

**59 standard single bedrooms**



# Coad Court

Coad Court is located centrally within the accommodation buildings and is split into 11 houses. Bedrooms are either single en-suite or standard single rooms containing their own wash basins, with access to shared toilet and shower facilities. Ground floor rooms are available with accessible facilities. These large rooms are bright, and some have stunning country views.

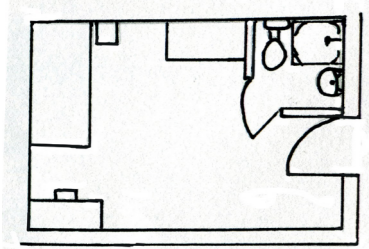
**44 en-suite single and 9 standard single bedrooms**



# Main Building

This is the oldest building in the University, dating back to 1845. It houses 33 spacious bedrooms of varying type, they are all en-suite single bedrooms, with twin rooms available on request. There is a large common room for use by Main Building residents.

**22 en-suite single and 11 en-suite twin bedrooms**



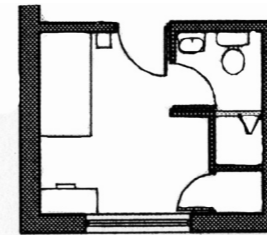
Please note, Main Building is not suitable for international students due to closure over the Christmas period.

# Vic Hughes Hall 1 & 2

Vic Hughes Hall 1 is a self-catered block, containing 26 quiet en-suite bedrooms, with accessible rooms available. Kitchen areas are shared between 10 students.

Vic Hughes Hall 2 is a catered block with light and airy en-suite bedrooms. There is a communal lounge area on the ground floor.

**26 en-suite single and 26 self-catered single bedrooms**



# West Lodge

This self-catered block contains 58 en-suite bedrooms divided across two halls, which have under-floor heating provided by the University biomass boiler. There is a communal lounge and kitchen on each floor, shared between 8 students. Accessible facilities are available.

## 58 en-suite self-catered single bedrooms



# Woodlands Lodge 1, 2 & 3

Woodlands Lodge 1 and 2 provide large en-suite bedrooms over two storeys, with a common room and basic kitchenette for residents' use. Some of these rooms may be used as en-suite twin bedrooms if required. Accessible facilities are available.

Woodlands Lodge 3 has small en-suite bedrooms, located close to the main teaching blocks and the Bledisloe lawn. Woodlands Lodge 3 doesn't have its own common room.

## 48 en-suite bedrooms



# How to apply

Once you have firmly accepted a conditional or unconditional offer from the RAU as your first choice, you may apply for accommodation. Applications are processed on a first-come, first-served basis so we recommend that you get your accommodation application to us as soon as possible. To make your accommodation application, visit My RAU at [applicants.rau.ac.uk](http://applicants.rau.ac.uk).

To secure your room, you'll need to pay a £200 pre-payment, via My RAU.

You should receive confirmation of your accommodation by the end of August, which you will need to accept or decline within 14 days. Once you have confirmed your accommodation offer, we will contact you with further details such as hall of residence, how to pay, and the Terms and Conditions of Residency.

## Accommodation charges

The charges below are an annual rate, given as a guide only. Please visit [rau.ac.uk](http://rau.ac.uk) for the most up-to-date information.

### 39 week contract

Room type	Full board	Half board	Self-catered
Large en-suite single	£8,167	£7,157	
En-suite single	£7,980	£6,970	£5,261
Small en-suite single	£7,793	£6,783	
Standard single	£6,633	£5,586	
Large standard single	£6,821	£5,848	

### 31 week contract

Room type	Full board	Half board
Large en-suite single	£6,975	£6,073
En-suite single	£6,814	£5,912
Small en-suite single	£6,653	£5,751
En-suite twin	£4,205	£3,335

## Car parking

Free parking is available on campus and subject to applying for a parking permit as part of your on line self registration, you will be notified when you can do this. A parking permit is an entitlement to park only if space is available.



## Catering

Full or half board catering meal options are available in either the main dining room or the Retreat Café, offering a selection of hot and cold dishes. Catering staff are able to cater for special dietary needs but please advise of your requirements at the time of booking your accommodation.

# Frequently asked questions

## Do I need a TV licence?

If you're planning to watch TV programmes live, or on demand, you must purchase a TV licence. Visit [tvlicensing.co.uk](http://tvlicensing.co.uk) to find out more.

## Can I smoke in my room in Halls of Residence?

The University has a smoking ban in all of its buildings which also includes e-cigarettes. For more information please see the RAU smoking policy in the Student Handbook on the RAU website.

## Can I have guests to stay?

Guests are welcome for a maximum of three nights, but must be registered at the Porters' Lodge. The University has a duty, under fire regulations and for security reasons, to keep an accurate register of all persons living, or staying as occasional / overnight guests in residential buildings.

## How do I find private rented accommodation?

Please visit the RAU student lettings website [urbanfox.info](http://urbanfox.info) to view the student properties and house shares currently available.

## Am I guaranteed accommodation?

Applications are processed on a first-come, first-served basis so it's vital that you apply for accommodation online via My RAU (and pay the £200 pre-payment) as soon as you can. We endeavor to offer all first year students accommodation on campus, but if you are unsuccessful, the accommodation office will support you in finding an alternative in Cirencester or the surrounding villages.

## Is there a launderette on campus?

There is a launderette located between Bledisloe Court and Coad Court, for use by all students.

## Will I get my first choice of room?

When you apply online, you'll be asked to list the room types on offer in order of preference and we try hard to make sure you get your first choice of room.

## Will my pre-payment be refunded if I choose not to come?

The pre-payment is deducted from your annual accommodation fees. It will only be refunded if your the place is conditional and the conditions are not met or if we are unable to offer you accommodation.

## How many weeks of the academic year will I pay for?

39 weeks

Your bedroom is allocated to you for the entire academic year. Your meal plan is operational until the end of each term. If you choose to remain in residence you can purchase meals/snacks as required. Please note that during the University Christmas closure the catering outlets are closed.

31 weeks

Main Building bedrooms are available during term time only and must be vacate with all belongings removed for the Christmas and Easter vacations.

## Will I have internet in my room?

You can access the internet from your desktop / laptop by connecting to the University's network. To access Wi-Fi through your smartphone or tablet, you'll need to register the device with IT services.

## How much does it cost to live in halls of residence?

Please refer to our accommodation charges. The charges include electricity and internet access.

## When will I find out if I have been allocated accommodation?

You should receive your confirmation of accommodation by the end of August, once your offer to study has been confirmed, which you will need to accept or decline within 14 days. Once you have confirmed your accommodation offer, we will contact you with further details such as hall of residence, how to pay, and the Terms and Conditions of Residency.



Administration Wing	1	George Wing	13	Sports Hall	25
Bathurst Wing	2	IT	14	Sports Pavilion	26
Biomass Building	3	Kenneth Russell Room	15	Student Support Services	27
Bledisloe Court	4	Launderette	16	Student Surgery	28
Boutflour Hall	5	Library	17	Student Union Office	29
Catering & Dining Rooms	6	Library Foyer	18	Tithe Barn & Bar	30
Cedar Lodge	7	Parkinson Lecture Theatre	19	Vic Hughes Hall A	31
Chapel	8	Postgraduate Centre	20	Vic Hughes Hall B	32
Coad Court	9	Refresh Café	21	West Lodge 1	33
Fitness Centre	10	Retreat Café and Shop	22	West Lodge 2	34
Garden House	11	Science Laboratories	23	Woodland Lodge 1	35
Gamer Lecture Block	12	Sir Emrys Jones Centre	24	Woodland Lodge 2	36
				Woodland Lodge 3 / Jubilee	37

Main Entrance A  
 Stroud Road Entrance B  
 Woodland Entrance C

Published by the Royal Agricultural University,  
 Cirencester, Gloucestershire GL7 6JS  
 Tel: +44(0)1285 652531 (main number)  
 Tel: +44(0)1285 889823 (accommodation number)  
 email: accommodation@rau.ac.uk

[www.rau.ac.uk](http://www.rau.ac.uk)



Royal  
 Agricultural  
 University  
 Cirencester

